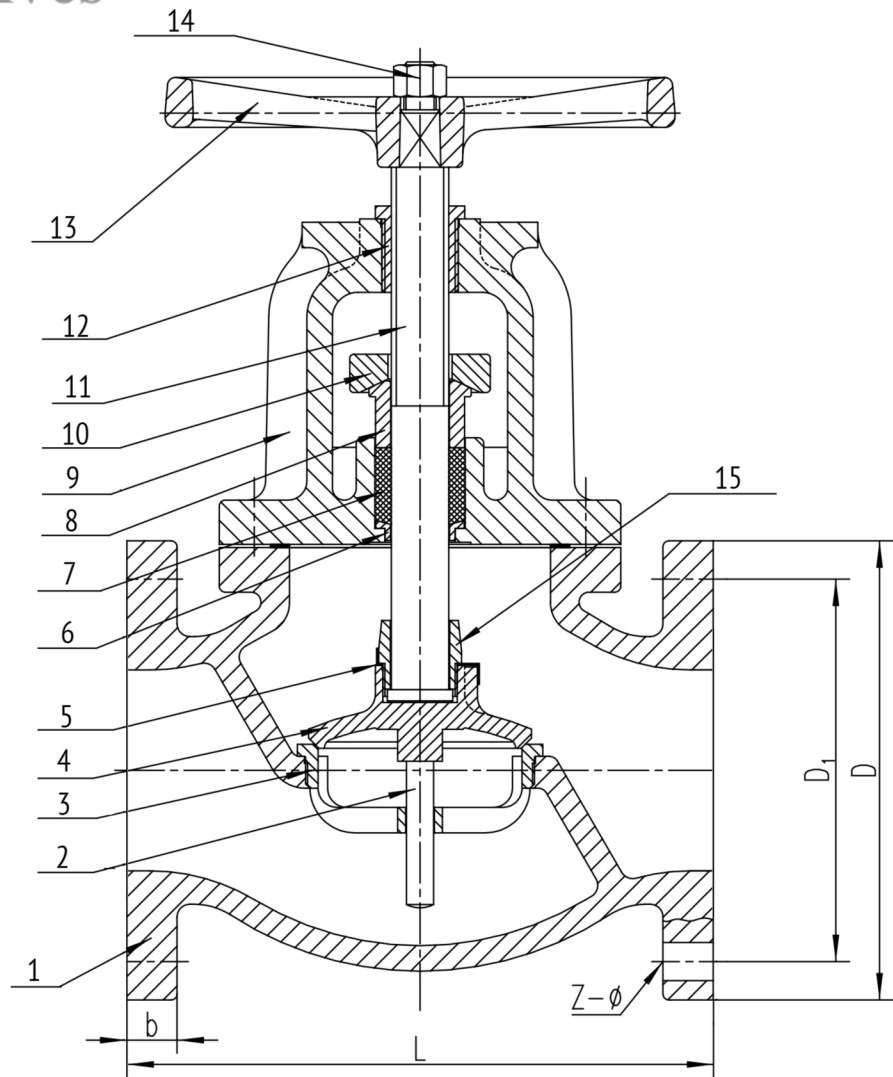


Steamco Valves



SIZE	L	D	D1	b	z-ød	WEIGHT
2	8.00	6.00	4.75	0.62	4 x 0.75	39
2-1/2	8.50	7.00	5.50	0.69	4 x 0.75	46
3	9.50	7.50	6.00	0.75	4 x 0.75	66
4	11.50	9.00	7.50	0.94	8 x 0.75	101
5	13.00	10.00	8.50	0.94	8 x 0.88	126
6	14.00	11.00	9.50	1.00	8 x 0.88	178
8	19.50	13.50	11.75	1.12	8 x 0.88	360
10	24.50	16.00	14.25	1.19	12 x 1.00	586

APPLICABLE STANDARDS

BASIC DESIGN: MSS SP-85, ASME B16.34

FLANGE DIMENSIONS: ASME B16.1

FACE TO FACE DIMENSIONS: ASME B16.10

WORKING PRESSURE: 125 PSI

NO.	PART NAME	MATERIAL	STANDARD	NO.	PART NAME	MATERIAL	STANDARD
1	BODY	CAST IRON	ASTM A126B	8	GLAND	BRONZE	ASTM B62
2	BOTTOM GUIDE	STEEL	ASTM A108	9	BONNET	CAST IRON	ASTM A126B
3	BODY SEAT RING	BRONZE	ASTM B62	10	GLAND FLANGE	STEEL	ASTM A182 WCB
4	DISC 2-3"	BRONZE	ASTM B62	11	STEM	BRONZE	ASTM B16
4	DISC 4-10"	CAST IRON/BRZ FACING	ASTM A126B/B62	12	YOKE BUSHING	BRONZE	ASTM B62
5	LOCK WASHER	STAINLESS STEEL	18-8	13	HANDWHEEL	MALLEABLE IRON	ASTM A338
6	STEM BUSHING	BRONZE	ASTM B62	14	HANDWHEEL NUT	STEEL	ASTM A307B
7	PACKING	GRAPHITE	NON-ASBESTOS	15	DISC STEM RING	BRONZE	ASTM B62

Steamco Fig. 126A

CLASS 125 IRON BODY GLOBE VALVE