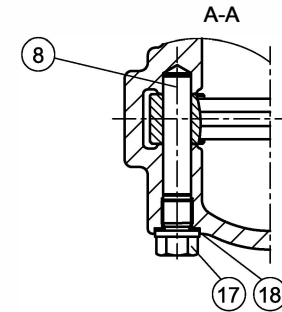
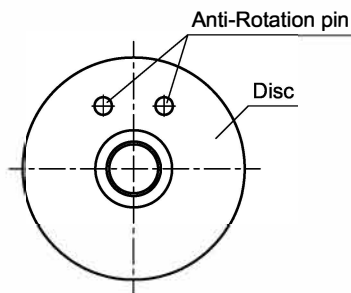



ITEM	NAME	MATERIAL
1	BODY	ASTM A216-WCB
2	SEAT	ASTM A105N+STL
3	DISC	ASTM A105N+13%Cr
4	WASHER	ASTM A276-410
5	NUT	ASTM A276-304
6	ANTI-ROTATION PIN	AISI 1035
7	HINGE ARM	ASTM A216-WCB
8	HINGE PIN	ASTM A276-410
9	NAMEPLATE	ASTM A240-304
10	RIVET	ASTM A240-304
11	RTJ GASKET	AISI 1008
12	COVER	ASTM A216-WCB
13	BOLT	ASTM A193-B7
14	NUT	ASTM A194-2H
15	EYEBOLT	AISI 1035
16	SPLIT PIN	ASTM A276-304
17	PLUG	ASTM A276-410
18	GASKET	ASTM A276-304



ITEM	FIG NO.	SIZE	UNIT	d	A	B	C	D	n	E	F	G	S _B	Weight(lbs/kgs)
01	SC1500CSF8	2"	mm	47	368	38.1	215	165.1	8	25	92.1	250	19.1	154/70
		2"	in	1.85	14.50	1.50	8.50	6.5	8	1	3.62	9.84	0.75	





J.J. VALVE

Toll Free 800.582.5837 Local 310.605.0090

Here at J.J. Valve, we utilize a wide variety of products to meet your needs when it comes to industrial valves.

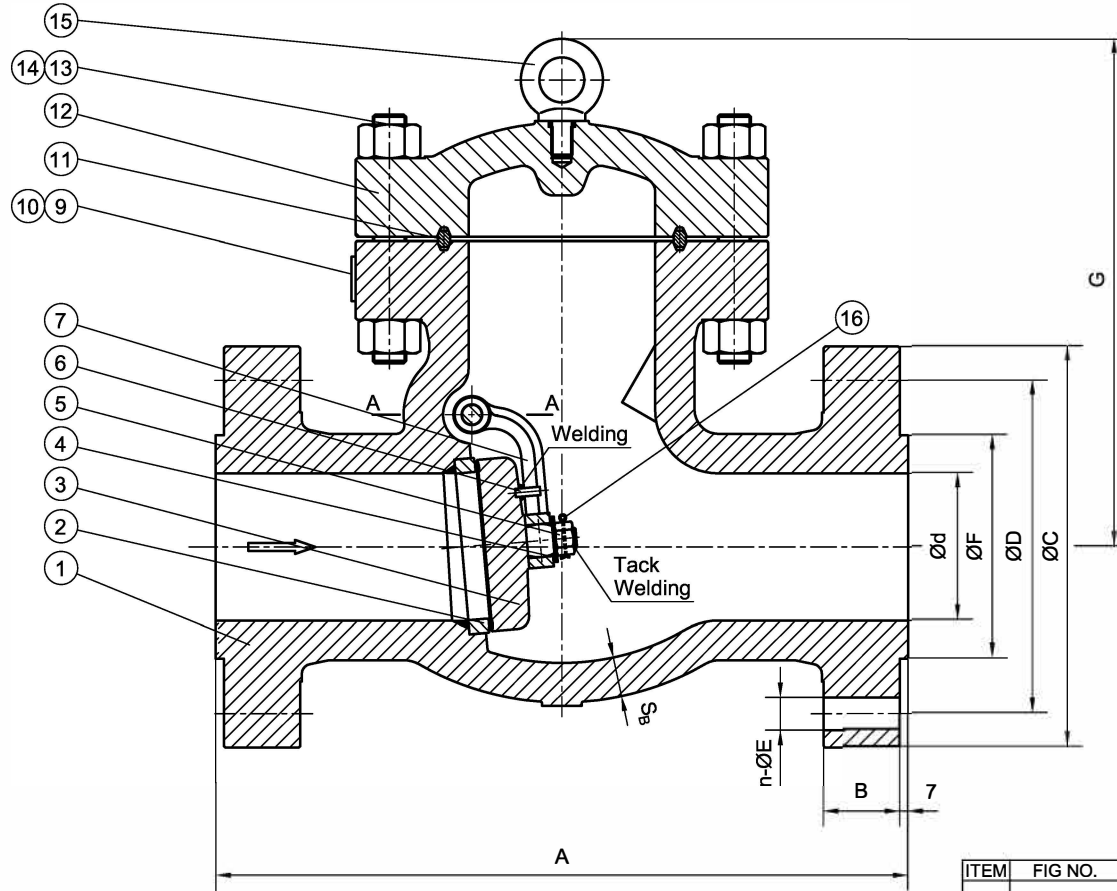
TITLE: CAST STEEL SWING CHECK VALVE
CLASS 1500- API TRIM 8- RF

MARKING SYSTEM	MSS-SP-25	INSPECTION & TEST: API 598	MATERIAL: ASTM A216 WCB	UNITS: Inch, mm
DIM.OF FLANGE	ANSI B16.5	SHELL HYDRO 5575PSI	CLASS: 1500	DATE: 4/15/19
FACE TO FACE	ANSI B16.10	SEAT AIR N/A	SIZE: 2"	SCALE: N.T.S.
WALL THICKNESS	API 594	SEAT HYDRO 4080PSI	DRAWN BY: F.J.	FIG. No.: SC1500CSF8
NO.	DATE	DESCRIPTION	CHK'D & APR'D BY: E.C.	REV: 1

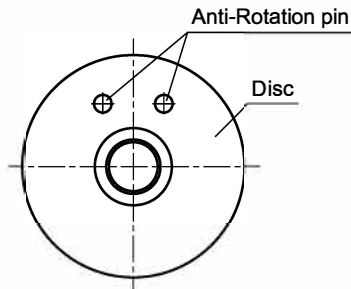
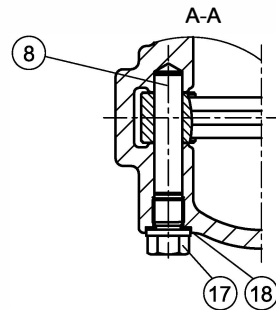
NO.	DATE	DESCRIPTION	PRP'D	REV'D	APP'D	DESIGNED
△	4/15/19	RELEASED	F.J.	E.C.	E.C.	


MARKING SYSTEM	MSS-SP-25	INSPECTION & TEST: API 598	MATERIAL: ASTM A216 WCB	UNITS: Inch, mm
DIM.OF FLANGE	ANSI B16.5	SHELL HYDRO 5575PSI	CLASS: 1500	DATE: 4/15/19
FACE TO FACE	ANSI B16.10	SEAT AIR N/A	SIZE: 2"	SCALE: N.T.S.
WALL THICKNESS	API 594	SEAT HYDRO 4080PSI	DRAWN BY: F.J.	FIG. No.: SC1500CSF8
NO.	DATE	DESCRIPTION	CHK'D & APR'D BY: E.C.	REV: 1

ITEM	NAME	MATERIAL
1	BODY	ASTM A216-WCB
2	SEAT	ASTM A105N+STL
3	DISC	ASTM A105N+13%Cr
4	WASHER	ASTM A276-410
5	NUT	ASTM A276-304
6	ANTI-ROTATION PIN	AISI 1035
7	HINGE ARM	ASTM A216-WCB
8	HINGE PIN	ASTM A276-410
9	NAMEPLATE	ASTM A240-304
10	RIVET	ASTM A240-304
11	RTJ GASKET	AISI 1008
12	COVER	ASTM A216-WCB
13	BOLT	ASTM A193-B7
14	NUT	ASTM A194-2H
15	EYEBOLT	AISI 1035
16	SPLIT PIN	ASTM A276-304
17	PLUG	ASTM A276-410
18	GASKET	ASTM A276-304



ITEM	FIG NO.	SIZE	UNIT	d	A	B	C	D	n	E	F	G	S _B	Weight(lbs/kgs)
01	SC1500CSF8	4"	mm	92	546	54	310	241.3	8	35	157.2	405	28.7	542/246
		4"	in	3.62	21.50	2.13	12.25	9.50	8	1-3/8	6.19	15.94	1.13	
02	SC1500CSF8	6"	mm	136	705	82.6	395	317.5	12	38	215.9	467	38.1	1213/550
		6"	in	5.35	27.75	3.25	15.5	12.5	12	1-1/2	8.5	18.39	1.5	
03	SC1500CSF8	8"	mm	178	832	92.1	485	393.7	12	45	269.9	620	47.8	2227/1010
		8"	in	7.0	32.75	3.62	19.0	15.5	12	1-3/4	10.62	24.4	1.88	





J.J. VALVE
Toll Free 800.582.5837 Local 310.605.0090

Here at J.J. Valve, we utilize a wide variety of products to meet your needs when it comes to Industrial valves.

TITLE: CAST STEEL SWING CHECK VALVE
CLASS 1500- API TRIM 8- RF

MATERIAL: ASTM A216 WCB	UNITS: Inch, mm
CLASS: 1500 DATE: 4/15/19	SCALE: N.T.S.
SIZE: 4"-8"	FIG. No.: SC1500CSF8
DRAWN BY: F.J.	CHK'D & APR'D BY: E.C. REV: 1
NO. DATE DESCRIPTION PRP'D REV'D APP'D	DWG No.:

NO.	DATE	DESCRIPTION	PRP'D	REV'D	APP'D	DESIGNED
△	4/15/19	RELEASED	F.J.	E.C.	E.C.	

MARKING SYSTEM	MSS-SP-25	INSPECTION & TEST: API 598	MATERIAL: ASTM A216 WCB
DIM.OF FLANGE	ANSI B16.5	SHELL HYDRO 5575PSI	CLASS: 1500 DATE: 4/15/19
FACE TO FACE	ANSI B16.10	SEAT AIR N/A	SIZE: 4"-8"
WALL THICKNESS	API 594	SEAT HYDRO 4080PSI	DRAWN BY: F.J.
	API 594, ANSI B16.34		CHK'D & APR'D BY: E.C. REV: 1