

3 Ribs uniformly distributed in circumference

ITEM	NAME	MATERIAL
1	BODY	ASTM A216-WCB
2	SEAT	ASTM A105N+STL
3	DISC WASHER	ASTM A276-420
4	DISC	ASTM A105N+13%Cr
5	DISC COVER	ASTM A276-410
6	RTJ GASKET	AISI 1008
7	BONNET	ASTM A216-WCB
8	BACKSEAT	ASTM A276-420+STL
9	PACKING SPACER	ASTM A276-410
10	PACKING	INCONEL600+GRAPHITE
11	GLAND	ASTM A276-410
12	GLAND FLANGE	ASTM A216-WCB
13	EYE BOLT	ASTM A193-B7
14	NUT	ASTM A194-2H
15	STEM NUT	ASTM A439 D-2
16	SCREW	AISI 1025
17	WASHER	ASTM A283 GRC
18	NUT	ASTM A194-2H
19	HANDWHEEL	ASTM A536 60-40-18
20	STEM	ASTM A182-F6a
21	PIN	AISI 1035
22	BOLT	ASTM A193-B7
23	NUT	ASTM A194-2H
24	NAMEPLATE	ASTM A240-304
25	RIVET	ASTM A240-304

NOTE:

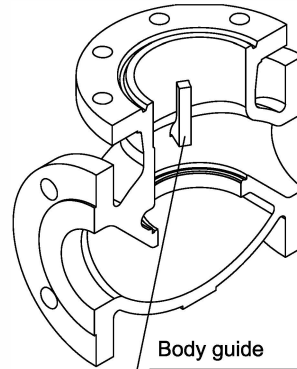
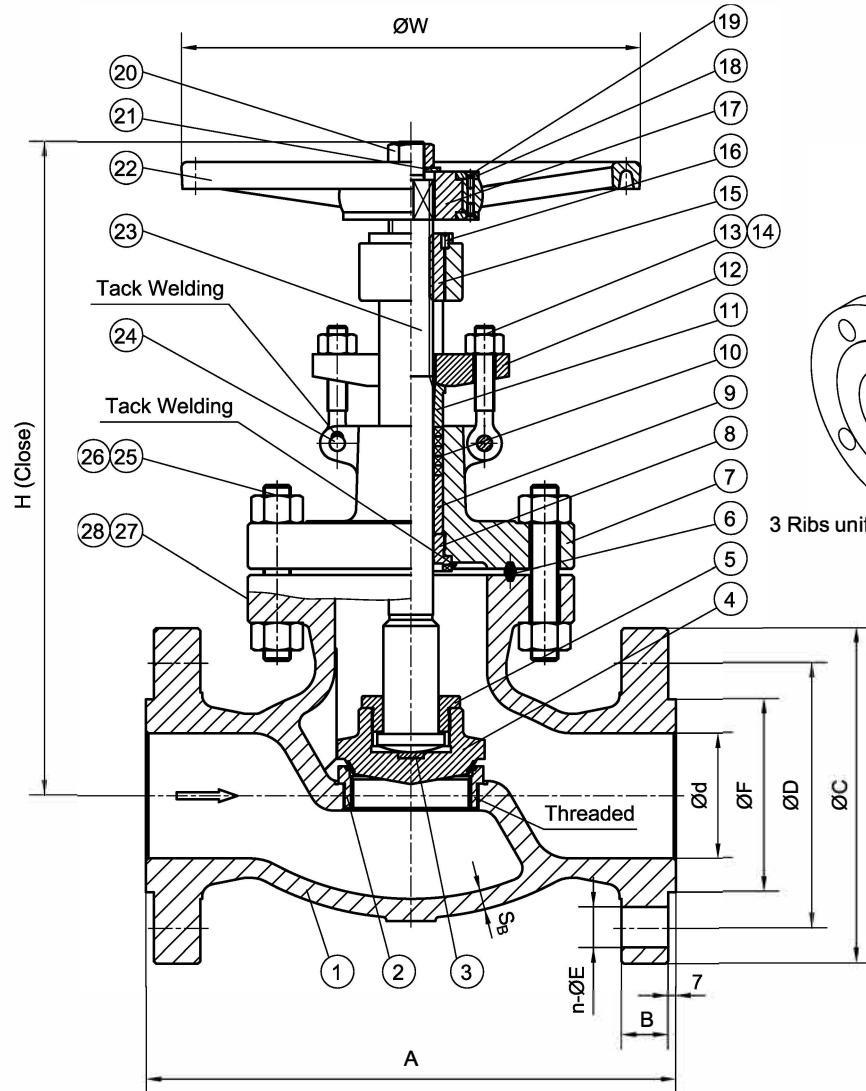
1. API 622 LOW EMISSION PACKING

ITEM	FIG NO.	SIZE	UNIT	d	A	B	C	D	n	E	F	H	W	S _b	Weight(lbs/kgs)
01	GL600CSF8	2"	mm	51	292	25.4	165	127	8	19	92.1	365	250	11.2	84/38
		2"	in	2.0	11.5	1.00	6.5	5.0	8	3/4	3.62	14.37	9.84	0.44	
02	GL600CSF8	2-1/2"	mm	64	330	28.6	190	149.2	8	22	104.8	477	300	11.9	110/50
		2-1/2"	in	2.52	13.0	1.13	7.5	5.88	8	7/8	4.12	18.78	11.81	0.47	
03	GL600CSF8	3"	mm	76	356	31.8	210	168.3	8	22	127	457	350	12.7	128/58
		3"	in	3.0	14.0	1.25	8.25	6.62	8	7/8	5.0	17.99	13.78	0.5	

TITLE:		CAST STEEL GLOBE VALVE	
		CLASS 600- API TRIM 8- RF- HANDWHEEL OPERATED	
MATERIAL:	ASTM A216 WCB	UNITS:	Inch, mm
CLASS:	600	DATE:	4/15/19
SCALE:	N.T.S.	FIG. No.:	
SIZE:	2"-3"	DRAWN BY:	F.J.
		GL600CSF8	
CHK'D & APR'D BY:	E.C.	REV:	1
DWG No.:			

NO.	DATE	DESCRIPTION	PRP'D	REV'D	APP'D	DESIGNED
△	4/15/19	RELEASED	F.J.	E.C.	E.C.	

MARKING SYSTEM	MSS-SP-25	INSPECTION & TEST: API 598
DIM.OF FLANGE	ANSI B16.5	SHELL HYDRO 2225PSI
FACE TO FACE	ANSI B16.10	SEAT AIR N/A
WALL THICKNESS	API 623	BACK SEAT HYDRO 1630PSI
DESIGNED	API 623, ANSI B16.34	



3 Ribs uniformly distributed in circumference

ITEM	NAME	MATERIAL
1	BODY	ASTM A216-WCB
2	SEAT	ASTM A105N+STL
3	DISC WASHER	ASTM A276-420
4	DISC	ASTM A105N+13%Cr
5	DISC COVER	ASTM A276-410
6	RTJ GASKET	AISI 1008
7	BONNET	ASTM A216-WCB
8	BACKSEAT	ASTM A276-420+STL
9	PACKING SPACER	ASTM A276-410
10	PACKING	INCONEL600+GRAPHITE
11	GLAND	ASTM A276-410
12	GLAND FLANGE	ASTM A216-WCB
13	EYE BOLT	ASTM A193-B7
14	NUT	ASTM A194-2H
15	STEM NUT	ASTM A439 D-2
16	SCREW	AISI 1025
17	HAMMER BLOCK	AISI 1045
18	COVER PLATE	AISI 1035
19	COUNTERSUNK BOLT	AISI 1035
20	NUT	ASTM A194-2H
21	WASHER	ASTM A283 GRC
22	HANDWHEEL	ASTM A536 60-40-18
23	STEM	ASTM A182-F6a
24	PIN	AISI 1035
25	BOLT	ASTM A193-B7
26	NUT	ASTM A194-2H
27	NAMEPLATE	ASTM A240-304
28	RIVET	ASTM A240-304

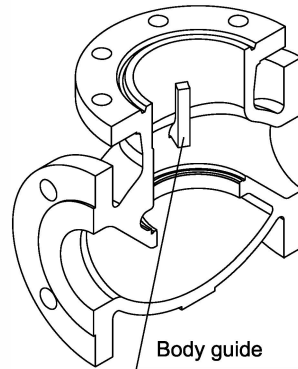
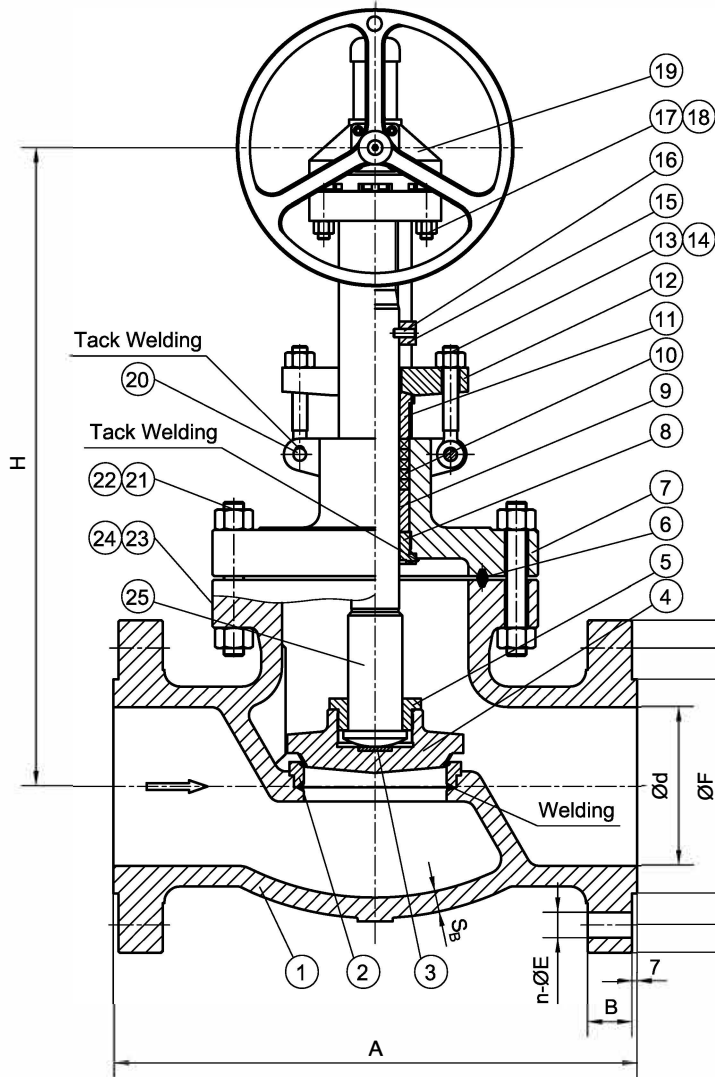
NOTE:

1. API 622 LOW EMISSION PACKING

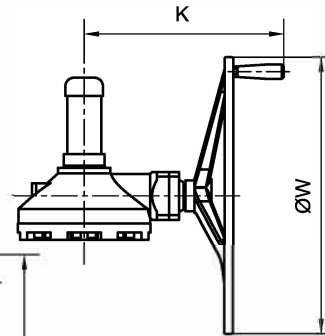
ITEM	FIG NO.	SIZE	UNIT	d	A	B	C	D	n	E	F	H	W	S _b	Weight(lbs/kgs)
01	GL600CSF8	4"	mm	102	432	38.1	275	215.9	8	25	157.2	536	400	16	278/126
		4"	in	4.0	17.0	1.5	10.75	8.5	8	1	6.19	21.1	15.75	0.63	

TITLE:		CAST STEEL GLOBE VALVE	
		CLASS 600- API TRIM 8- RF- HANDWHEEL OPERATED	
MARKING SYSTEM	MSS-SP-25	INSPECTION & TEST: API 598	MATERIAL: ASTM A216 WCB
DIM.OF FLANGE	ANSI B16.5	SHELL HYDRO 2225PSI	UNITS: Inch, mm
FACE TO FACE	ANSI B16.10	SEAT AIR N/A	CLASS: 600 DATE: 4/15/19
WALL THICKNESS	API 623	BACK SEAT HYDRO 1630PSI	SCALE: N.T.S.
NO.	DATE	DESCRIPTION	FIG. No.: GL600CSF8
4/15/19	RELEASED	F.J. E.C. E.C.	DRAWN BY: F.J.
			CHK'D & APR'D BY: E.C. REV: 1
			DWG No.:

NO.	DATE	DESCRIPTION	PRPD	REV'D	APP'D	DESIGNED
						API 623, ANSI B16.34



3 Ribs uniformly distributed in circumference



ITEM	NAME	MATERIAL
1	BODY	ASTM A216-WCB
2	SEAT	ASTM A105N+STL
3	DISC WASHER	ASTM A276-420
4	DISC	ASTM A105N+13%Cr
5	DISC BUSHING	ASTM A276-410
6	RTJ GASKET	AISI 1008
7	BONNET	ASTM A216-WCB
8	BACKSEAT	ASTM A276-420+STL
9	PACKING SPACER	ASTM A276-410
10	PACKING	INCONEL600+GRAPHITE
11	GLAND	ASTM A276-410
12	GLAND FLANGE	ASTM A216-WCB
13	EYE BOLT	ASTM A193-B7
14	NUT	ASTM A194-2H
15	STEM GUIDE	AISI 1045
16	ANTI-ROTATION PIN	AISI 1035
17	BOLT	ASTM A193-B7
18	NUT	ASTM A194-2H
19	GEAR	ASTM A216-WCB
20	PIN	AISI 1035
21	BOLT	ASTM A193-B7
22	NUT	ASTM A194-2H
23	NAMEPLATE	ASTM A240-304
24	RIVET	ASTM A240-304
25	STEM	ASTM A182-F6a

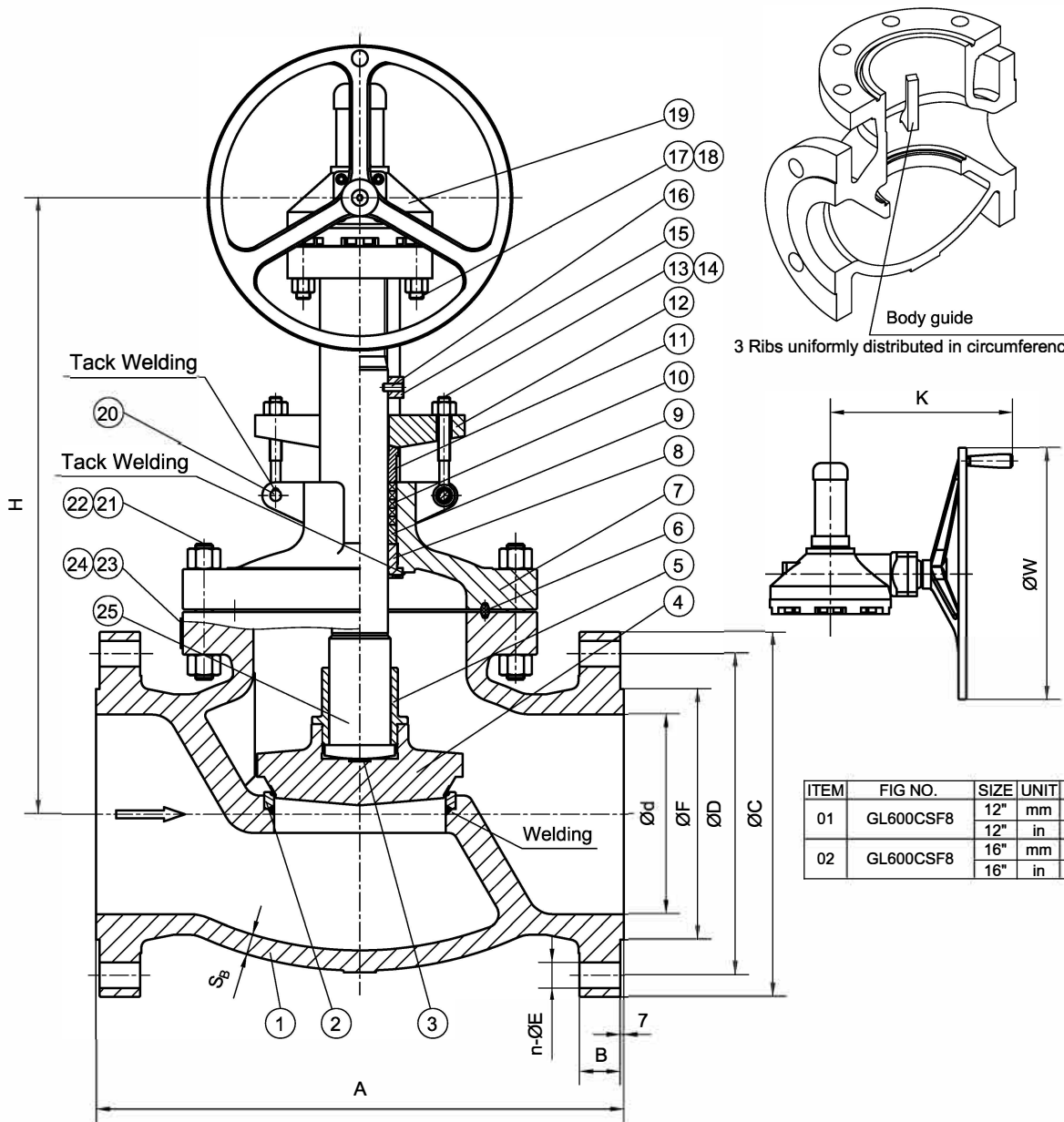
NOTE:

1. API 622 LOW EMISSION PACKING

ITEM	FIG NO.	SIZE	UNIT	d	A	B	C	D	n	E	F	H	W	K	S _b	Weight(lbs/kgs)
01	GL600CSF8	8"	mm	200	660	55.6	420	349.2	12	32	269.9	835	710	580	25.4	1197/543
		8"	in	7.87	26.0	2.18	16.5	13.75	12	1-1/4	10.62	32.87	27.95	22.83	1.00	
02	GL600CSF8	10"	mm	248	787	63.5	510	431.8	16	35	323.8	885	800	580	28.7	2218/1006
		10"	in	9.76	31.0	2.5	20.0	17.0	16	1-3/8	12.75	34.84	31.5	22.83	1.13	

TITLE: CAST STEEL GLOBE VALVE
CLASS 600- API TRIM 8 - RF - GEAR OPERATED

					MARKING SYSTEM	MSS-SP-25	INSPECTION & TEST: API 598			MATERIAL: ASTM A216 WCB			UNITS: Inch, mm	
					DIM.OF FLANGE	ANSI B16.5	SHELL	HYDRO	2225PSI	CLASS: 600	DATE: 4/15/19	SCALE: N.T.S.		
					FACE TO FACE	ANSI B16.10	SEAT	AIR	N/A	SIZE: g~10"	FIG. No.: GL600CSF8			
	4/15/19	RELEASED	F.J.	E.C.	E.C.	WALL THICKNESS	API 623	BACK SEAT	HYDRO	1630PSI	DRAWN BY: F.J.			
NO.	DATE	DESCRIPTION	PRP'D	REV'D	APP'D	DESIGNED	API 623, ANSI B16.34		CHK'D & APR'D BY: E.C.		REV: 1	DWG No.:		



ITEM	NAME	MATERIAL
1	BODY	ASTM A216-WCB
2	SEAT	ASTM A105N+STL
3	DISC WASHER	ASTM A276-420
4	DISC	ASTM A105N+13%Cr
5	DISC BUSHING	ASTM A276-410
6	RTJ GASKET	AISI 1008
7	BONNET	ASTM A216-WCB
8	BACKSEAT	ASTM A276-420+STL
9	PACKING SPACER	ASTM A276-410
10	PACKING	INCONEL600+GRAPHITE
11	GLAND	ASTM A276-410
12	GLAND FLANGE	ASTM A216-WCB
13	EYE BOLT	ASTM A193-B7
14	NUT	ASTM A194-2H
15	STEM GUIDE	AISI 1045
16	ANTI-ROTATION PIN	AISI 1035
17	BOLT	ASTM A193-B7
18	NUT	ASTM A194-2H
19	GEAR	ASTM A216-WCB
20	PIN	AISI 1035
21	BOLT	ASTM A193-B7
22	NUT	ASTM A194-2H
23	NAMEPLATE	ASTM A240-304
24	RIVET	ASTM A240-304
25	STEM	ASTM A182-F6a

NOTE:
1. API 622 LOW EMISSION PACKING

ITEM	FIG NO.	SIZE	UNIT	d	A	B	C	D	n	E	F	H	W	K	S _b	Weight(lbs/kgs)
01	GL600CSF8	12"	mm	298	838	66.7	560	489	20	35	381	1071	800	605	31.8	2513/1140
		12"	in	11.73	33.0	2.63	22.0	19.25	20	1-3/8	15.0	42.17	31.5	23.82	1.25	
02	GL600CSF8	16"	mm	375	991	76.2	685	603.2	20	41	469.9	1245	1000	760	38.1	4762/2160
		16"	in	14.76	39.0	3.0	27.0	23.75	20	1-5/8	18.5	49.02	39.37	29.92	1.5	

					MARKING SYSTEM	MSS-SP-25	INSPECTION & TEST: API 598	MATERIAL: ASTM A216 WCB	UNITS: Inch, mm
					DIM.OF FLANGE	ANSI B16.5	SHELL HYDRO 2225PSI	CLASS: 600 DATE: 4/15/19	SCALE: N.T.S.
					FACE TO FACE	ANSI B16.10	SEAT AIR N/A	SIZE: 12"-16"	FIG. No.:
					WALL THICKNESS	API 623	BACK SEAT HYDRO 1630PSI	DRAWN BY: F.J.	GL600CSF8GO
△	4/15/19	RELEASED	F.J.	E.C.	DESIGNED	API 623, ANSI B16.34	CHK'D & APP'D BY: E.C.	REV: 1	DWG No.:

Toll Free 800.582.5837 Local 310.605.0090

Here at J.J. Valve, we utilize a wide variety of products to meet your needs when it comes to industrial valves.

TITLE: CAST STEEL GLOBE VALVE
CLASS 600- API TRIM 8 - RF- GEAR OPERATED