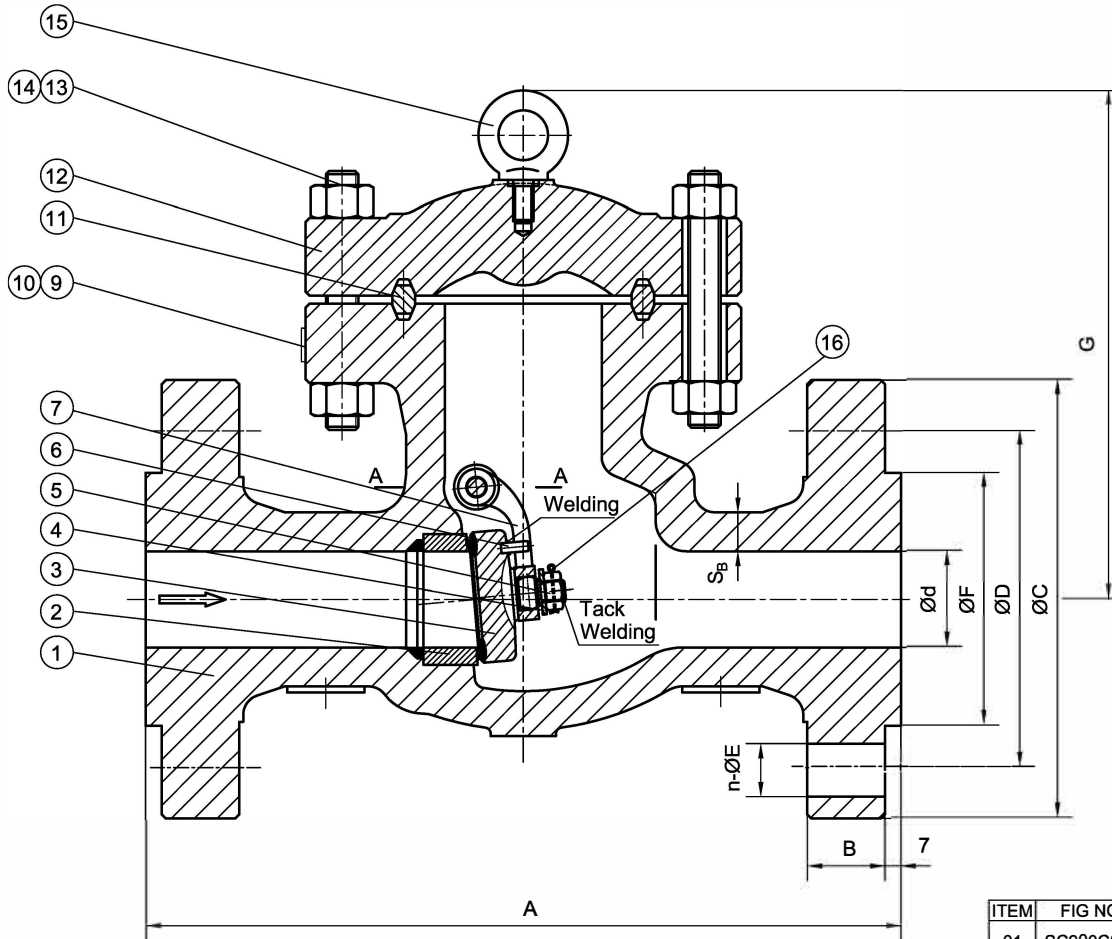


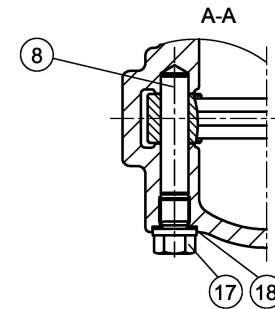
Steamco Fig#SC900CSF8 / 900# CS Flgd Swing Check Valve

2"

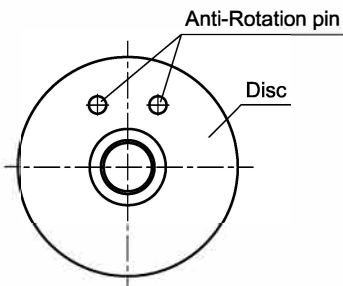
Page 1 of 5



ITEM	NAME	MATERIAL
1	BODY	ASTM A216-WCB
2	SEAT	ASTM A105N+STL
3	DISC	ASTM A105N+13%Cr
4	WASHER	ASTM A276-410
5	NUT	ASTM A276-304
6	ANTI-ROTATION PIN	AISI 1035
7	HINGE ARM	ASTM A216-WCB
8	HINGE PIN	ASTM A276-410
9	NAMEPLATE	ASTM A240-304
10	RIVET	ASTM A240-304
11	RTJ GASKET	AISI 1008
12	COVER	ASTM A216-WCB
13	BOLT	ASTM A193-B7
14	NUT	ASTM A194-2H
15	EYEBOLT	AISI 1035
16	SPLIT PIN	ASTM A276-304
17	PLUG	ASTM A276-410
18	GASKET	ASTM A276-304



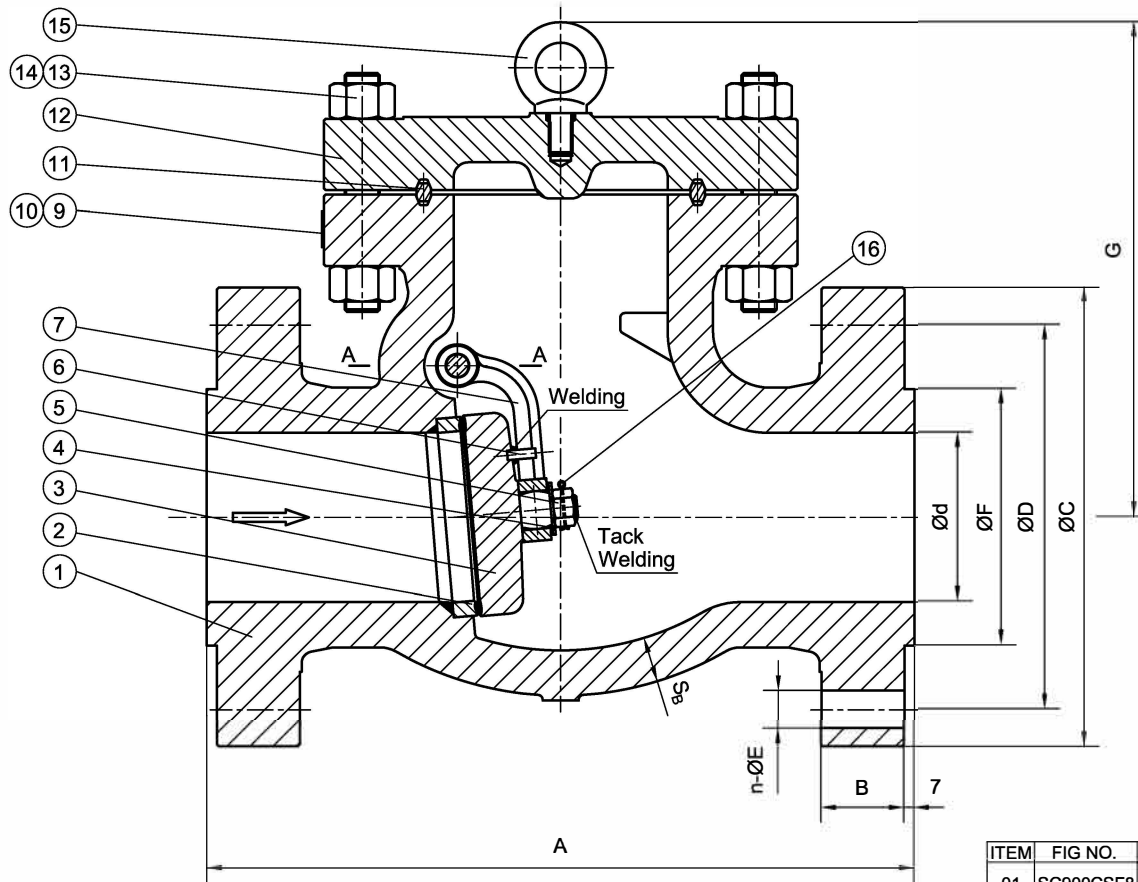
ITEM	FIG NO.	SIZE	UNIT	d	A	B	C	D	n	E	F	G	S _B	Weight(lbs/kgs)
01	SC900CSF8	2"	mm	47	368	38.1	215	165.1	8	25	92.1	250	19.1	154/70
		2"	in	1.85	14.50	1.50	8.50	6.5	8	1	3.62	9.84	0.75	



				MARKING SYSTEM	MSS-SP-25	INSPECTION & TEST: API 598			MATERIAL: ASTM A216 WCB			UNITS: Inch, mm		
				DIM.OF FLANGE	ANSI B16.5	SHELL	HYDRO	3350PSI	CLASS: 900	DATE: 4/15/19	SCALE: N.T.S.			
				FACE TO FACE	ANSI B16.10	SEAT	AIR	N/A	SIZE: 2"	FIG. No.: SC900CSF8				
				WALL THICKNESS	API 594	SEAT	HYDRO	2445PSI	DRAWN BY: F.J.					
NO.	DATE	DESCRIPTION	PRP'D	REV'D	APP'D	DESIGNED	API 594, ANSI B16.34		CHK'D & APR'D BY: E.C.		REV: 1	DWG No.:		

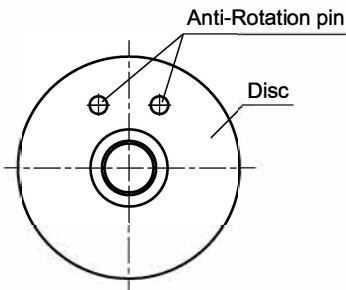
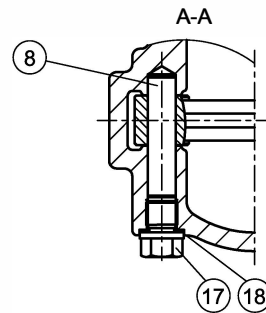
J.J. VALVE
 Toll Free 800.582.5837 Local 310.605.0090
 Here at J.J. Valve, we utilize a wide variety of products to meet your needs when it comes to industrial valves.

TITLE: CAST STEEL SWING CHECK VALVE
 CLASS 900- API TRIM 8- RF



ITEM	NAME	MATERIAL
1	BODY	ASTM A216-WCB
2	SEAT	ASTM A105N+STL
3	DISC	ASTM A105N+13%Cr
4	WASHER	ASTM A276-410
5	NUT	ASTM A276-304
6	ANTI-ROTATION PIN	AISI 1035
7	HINGE ARM	ASTM A216-WCB
8	HINGE PIN	ASTM A276-410
9	NAMEPLATE	ASTM A240-304
10	RIVET	ASTM A240-304
11	RTJ GASKET	AISI 1008
12	COVER	ASTM A216-WCB
13	BOLT	ASTM A193-B7
14	NUT	ASTM A194-2H
15	EYEBOLT	AISI 1035
16	SPLIT PIN	ASTM A276-304
17	PLUG	ASTM A276-410
18	GASKET	ASTM A276-304

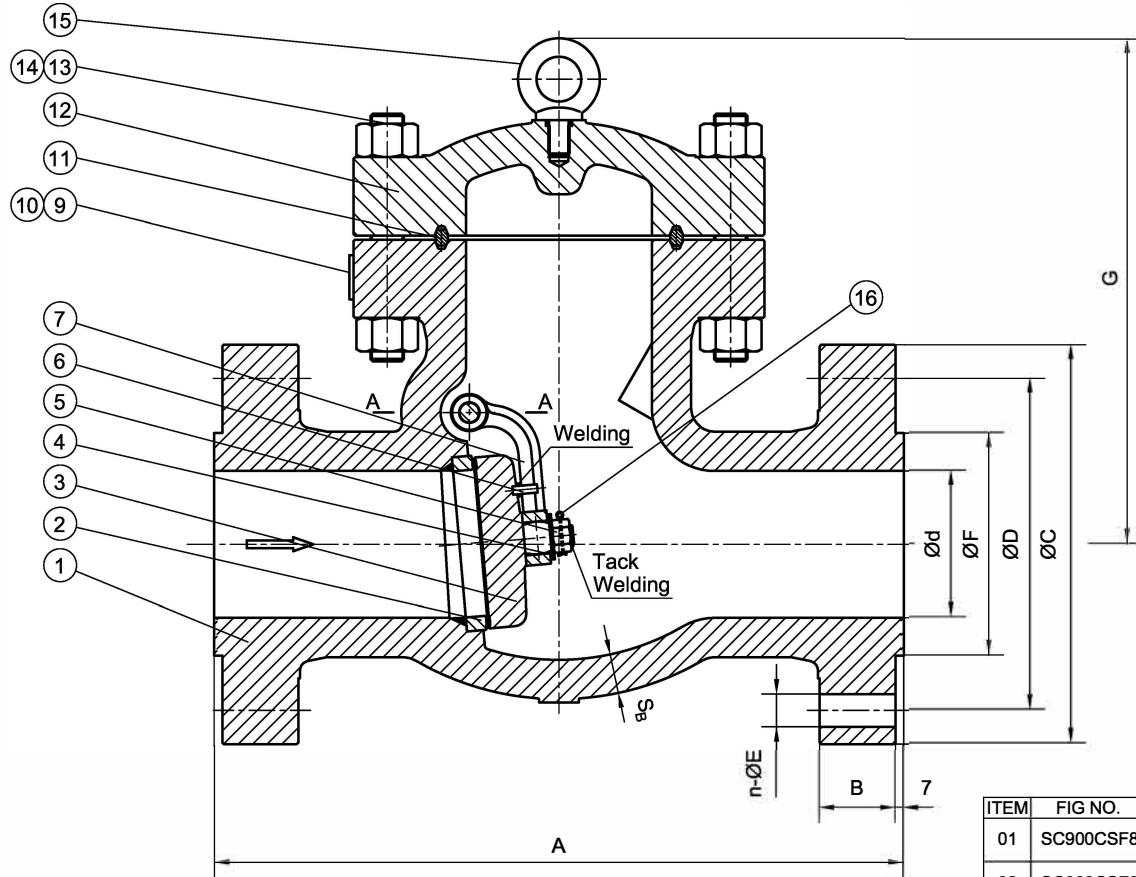
ITEM	FIG NO.	SIZE	UNIT	d	A	B	C	D	n	E	F	G	Se	Weight(lbs/kgs)
01	SC900CSF8	3"	mm	73	381	38.1	240	190.5	8	25	127	293	19.1	243/110
		3"	in	2.87	15.0	1.50	9.5	7.5	8	1	5.0	11.54	0.75	
02	SC900CSF8	4"	mm	98	457	44.5	290	235	8	32	157.2	323	21.3	331/150
		4"	in	3.84	18.0	1.75	11.5	9.25	8	1-1/4	6.19	12.72	0.84	



TITLE:		CAST STEEL SWING CHECK VALVE	
		CLASS 900- API TRIM 8- RF	
MATERIAL:	ASTM A216 WCB	UNITS:	Inch, mm
CLASS:	900	DATE:	4/15/19
SIZE:	3"-4"	SCALE:	N.T.S.
DRAWN BY:	F.J.	FIG. No.:	SC900CSF8
CHK'D & APR'D BY:	E.C.	REV:	1
		DWG No.:	

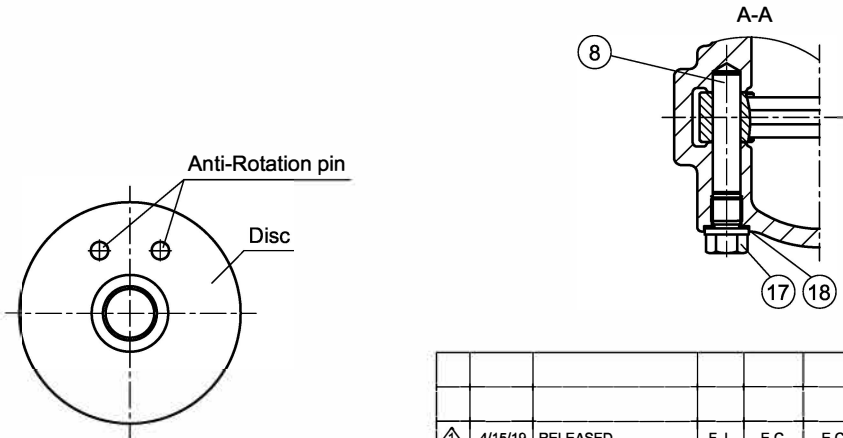
NO.	DATE	DESCRIPTION	PRPD	REV'D	APP'D	DESIGNED	MARKING SYSTEM	MSS-SP-25	INSPECTION & TEST:	API 598	
							DIM.OF FLANGE	ANSI B16.5	SHELL	HYDRO	3350PSI
							FACE TO FACE	ANSI B16.10	SEAT	AIR	N/A
							WALL THICKNESS	API 594	SEAT	HYDRO	2445PSI
							DESIGNED	API 594, ANSI B16.34			


Steamco Fig#SC900CSF8 / 900# CS Flgd Swing Check Valve 6" thru 8" Page 3 of 5



ITEM	NAME	MATERIAL
1	BODY	ASTM A216-WCB
2	SEAT	ASTM A105N+STL
3	DISC	ASTM A105N+13%Cr
4	WASHER	ASTM A276-410
5	NUT	ASTM A276-304
6	ANTI-ROTATION PIN	AISI 1035
7	HINGE ARM	ASTM A216-WCB
8	HINGE PIN	ASTM A276-410
9	NAMEPLATE	ASTM A240-304
10	RIVET	ASTM A240-304
11	RTJ GASKET	AISI 1008
12	COVER	ASTM A216-WCB
13	BOLT	ASTM A193-B7
14	NUT	ASTM A194-2H
15	EYEBOLT	AISI 1035
16	SPLIT PIN	ASTM A276-304
17	PLUG	ASTM A276-410
18	GASKET	ASTM A276-304

ITEM	FIG NO.	SIZE	UNIT	d	A	B	C	D	n	E	F	G	S _b	Weight(lbs/kgs)
01	SC900CSF8	6"	mm	146	610	55.6	380	317.5	12	32	215.9	432	26.2	672/305
		6"	in	5.75	24.0	2.19	15.0	12.5	12	1-1/4	8.5	17.0	1.03	
02	SC900CSF8	8"	mm	190	737	63.5	470	393.7	12	38	269.9	588	31.8	1124/510
		8"	in	7.48	29.0	2.5	18.5	15.5	12	1-1/2	10.62	23.15	1.25	





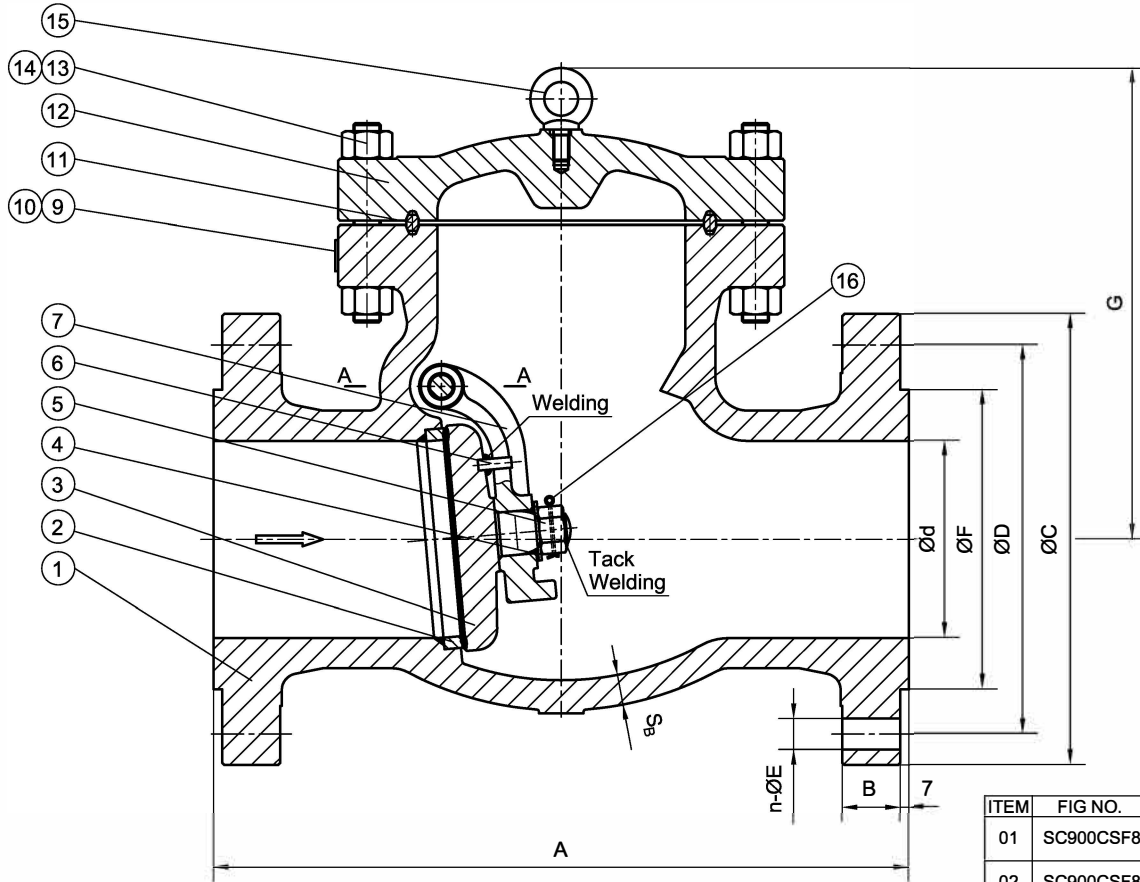
J.J. VALVE
Toll Free 800.582.5837 Local 310.605.0090

Here at J.J. Valve, we utilize a wide variety of products to meet your needs when it comes to industrial valves.

TITLE: CAST STEEL SWING CHECK VALVE
CLASS 900- API TRIM 8- RF

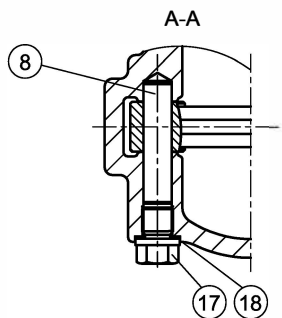
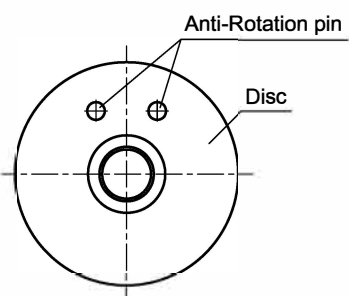
MATERIAL: ASTM A216 WCB	UNITS: Inch, mm
CLASS: 900 DATE: 4/15/19	SCALE: N.T.S.
SIZE: 6"-8"	FIG. No.: SC900CSF8
DRAWN BY: F.J.	CHKD & APR'D BY: E.C. REV: 1


NO.	DATE	DESCRIPTION	PRPD	REV'D	APP'D	DESIGNED	MARKING SYSTEM	MSS-SP-25	INSPECTION & TEST	API 598	WALL THICKNESS
	4/15/19	RELEASED	F.J.	E.C.	E.C.	API 594, ANSI B16.34	ANSI B16.5	SHELL	HYDRO	3350PSI	API 594
							ANSI B16.10	SEAT	AIR	N/A	SEAT



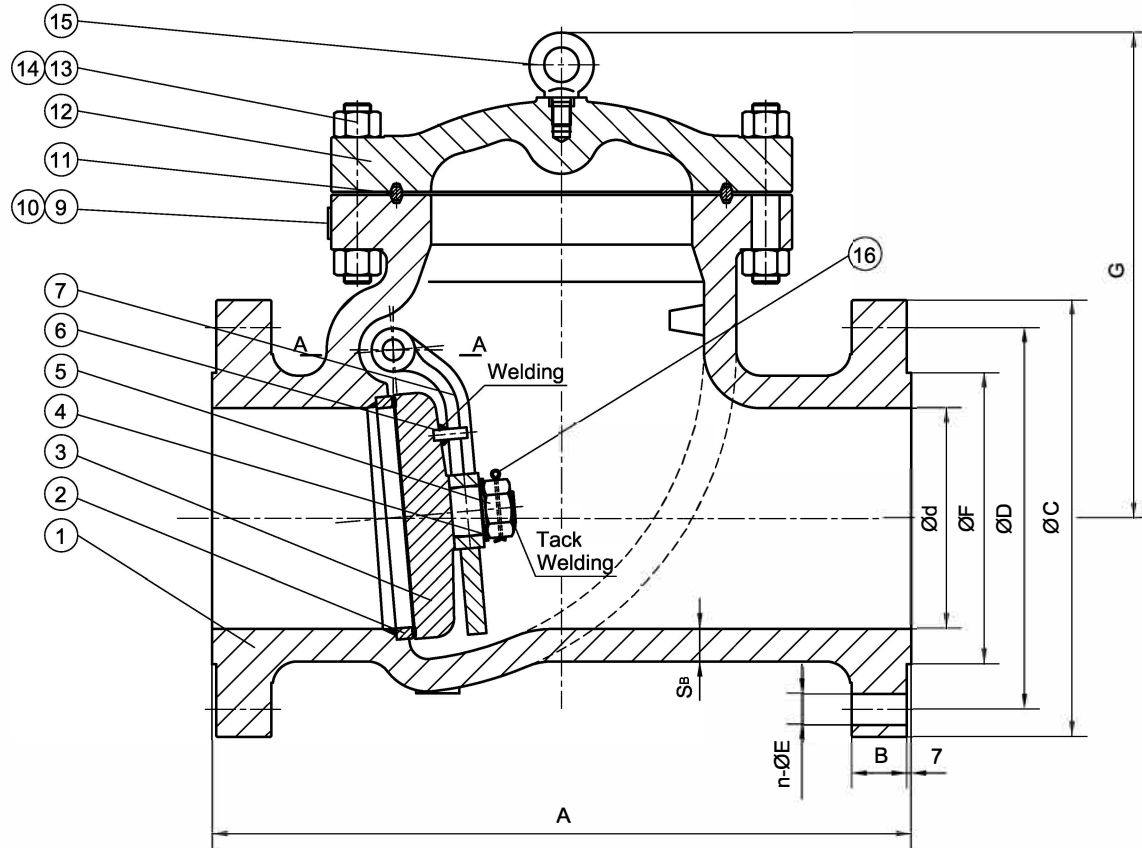
ITEM	NAME	MATERIAL
1	BODY	ASTM A216-WCB
2	SEAT	ASTM A105N+STL
3	DISC	ASTM A105N+13%Cr
4	WASHER	ASTM A276-410
5	NUT	ASTM A276-304
6	ANTI-ROTATION PIN	AISI 1035
7	HINGE ARM	ASTM A216-WCB
8	HINGE PIN	ASTM A276-410
9	NAMEPLATE	ASTM A240-304
10	RIVET	ASTM A240-304
11	RTJ GASKET	AISI 1008
12	COVER	ASTM A216-WCB
13	BOLT	ASTM A193-B7
14	NUT	ASTM A194-2H
15	EYEBOLT	AISI 1035
16	SPLIT PIN	ASTM A276-304
17	PLUG	ASTM A276-410
18	GASKET	ASTM A276-304

ITEM	FIG NO.	SIZE	UNIT	d	A	B	C	D	n	E	F	G	Ss	Weight(lbs/kgs)
01	SC900CSF8	10"	mm	238	838	70	545	469.9	16	38	323.8	583	36.6	1786/810
		10"	in	9.37	33.0	2.76	21.5	18.5	16	1-1/2	12.75	22.95	1.44	
02	SC900CSF8	12"	mm	282	965	79.5	610	533.4	20	38	381	668	42.2	2469/1120
		12"	in	11.1	38.0	3.13	24.0	21.0	20	1-1/2	15.0	26.3	1.66	



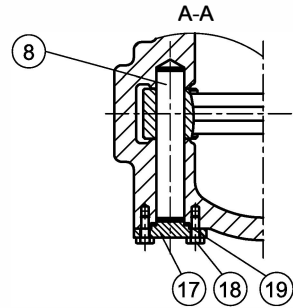
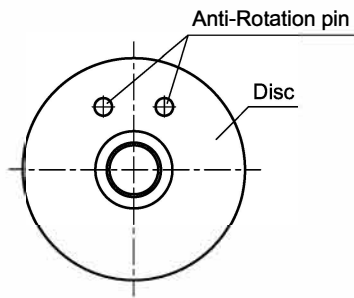

J.J. VALVE
 Toll Free 800.582.5837 Local 310.605.0080
 Here at J.J. Valve, we utilize a wide variety of products to meet your needs when it comes to industrial valves.


					MARKING SYSTEM	MSS-SP-25	INSPECTION & TEST: API 598			MATERIAL: ASTM A216 WCB			UNITS: Inch, mm		
					DIM.OF FLANGE	ANSI B16.5	SHELL	HYDRO	3350PSI	CLASS: 900	DATE: 4/15/19	SCALE: N.T.S.			
					FACE TO FACE	ANSI B16.10	SEAT	AIR	N/A	SIZE: 10"-12"			FIG. No.:		
					WALL THICKNESS	API 594	SEAT	HYDRO	2445PSI	DRAWN BY: F.J.			SC900CSF8		
NO.	DATE	DESCRIPTION	PRPD	REVD	APPD	DESIGNED	API 594, ANSI B16.34			CHKD & APR'D BY: E.C.		REV: 1	DWG No.:		



ITEM	NAME	MATERIAL
1	BODY	ASTM A216-WCB
2	SEAT	ASTM A105N+STL
3	DISC	ASTM A216-WCB+13%Cr
4	WASHER	ASTM A276-410
5	NUT	ASTM A276-304
6	ANTI-ROTATION PIN	AISI 1035
7	HINGE ARM	ASTM A216-WCB
8	HINGE PIN	ASTM A276-410
9	NAMEPLATE	ASTM A240-304
10	RIVET	ASTM A240-304
11	RTJ GASKET	AISI 1008
12	COVER	ASTM A216-WCB
13	BOLT	ASTM A193-B7
14	NUT	ASTM A194-2H
15	EYEBOLT	AISI 1035
16	SPLIT PIN	ASTM A276-304
17	GLAND	ASTM A105N
18	SCREW	ASTM A193-B7
19	GASKET	304+GRAPHITE

ITEM	FIG NO.	SIZE	UNIT	d	A	B	C	D	n	E	F	G	S _B	Weight(lbs/kgs)
01	SC900CSF8	16"	mm	356	1140	88.9	705	616	20	45	469.9	784	52.5	2469/ 1120
		16"	in	14.02	44.88	3.50	27.75	24.25	20	1-3/4	18.5	30.87	1.44	





J.J. VALVE
Toll Free 800.582.5837 Local 310.605.0090

Here at J.J. Valve, we utilize a wide variety of products to meet your needs when it comes to industrial valves.

TITLE:		CAST STEEL SWING CHECK VALVE	
		CLASS 900- API TRIM 8- RF	
MATERIAL:	ASTM A216 WCB	UNITS:	Inch, mm
CLASS:	900	DATE:	4/15/19
SCALE:	N.T.S.	FIG. No.:	SC900CSF8
SIZE:	16"	DRAWN BY:	F.J.
WALL THICKNESS:	API 594	CHK'D & APR'D BY:	E.C.
DESIGNED:	API 594, ANSI B16.34	REV:	1
NO.	DATE	DESCRIPTION	DWG No.:

NO.	DATE	DESCRIPTION	PRP'D	REV'D	APP'D	MARKING SYSTEM	MSS-SP-25	INSPECTION & TEST:	API 598
△	4/15/19	RELEASED	F.J.	E.C.	E.C.	DIM.OF FLANGE	ANSI B16.47A	SHELL	HYDRO
						FACE TO FACE	ANSI B16.10	SEAT	AIR
						WALL THICKNESS	API 594	SEAT	HYDRO
						DESIGNED	API 594, ANSI B16.34		2445PSI