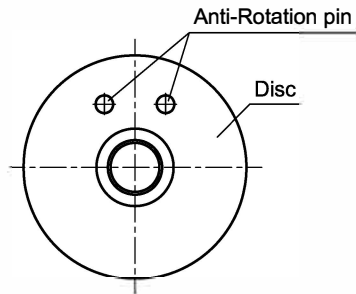
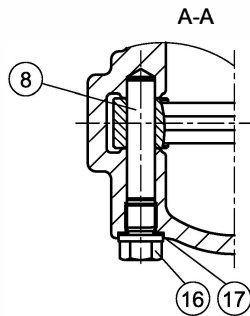


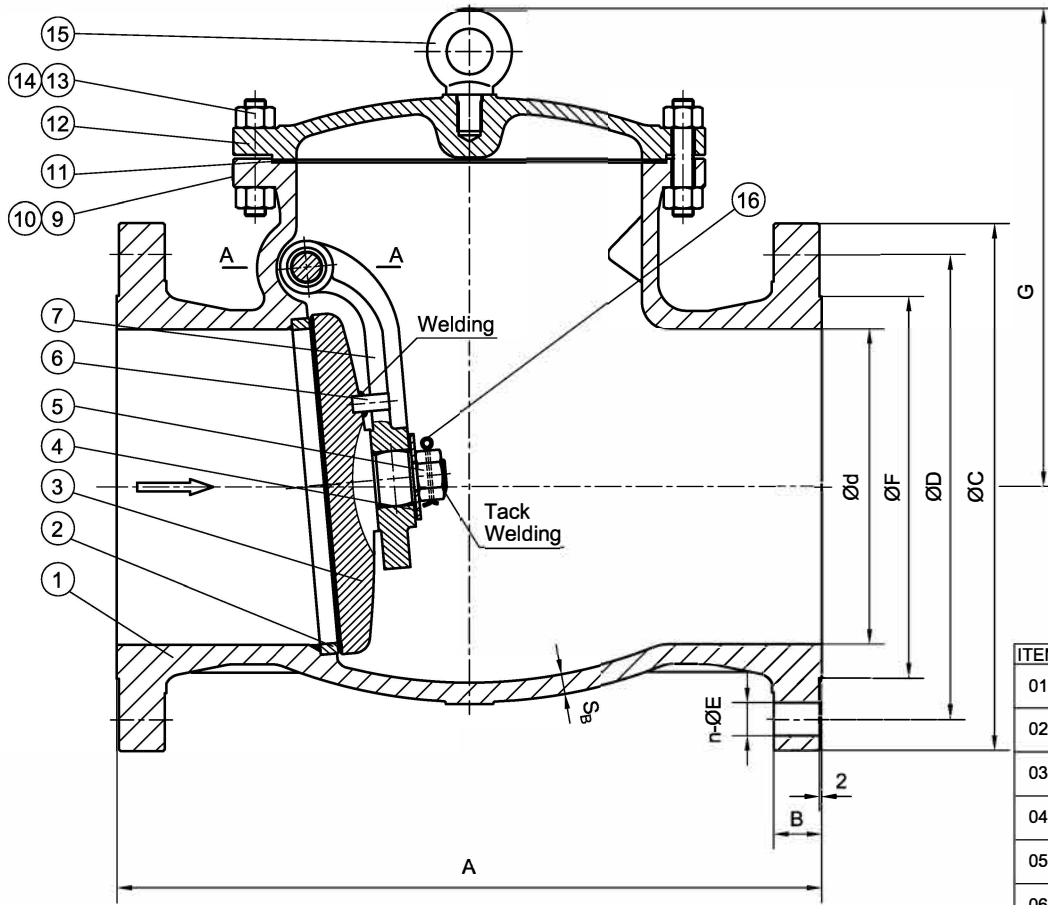
ITEM	NAME	MATERIAL
1	BODY	ASTM A216-WCB
2	SEAT	ASTM A105N+STL
3	DISC	ASTM A105N+13%Cr
4	WASHER	ASTM A276-410
5	NUT	ASTM A276-304
6	ANTI-ROTATION PIN	AISI 1035
7	HINGE ARM	ASTM A216-WCB
8	HINGE PIN	ASTM A276-410
9	NAMEPLATE	ASTM A240-304
10	RIVET	ASTM A240-304
11	GASKET	304+GRAPHITE
12	COVER	ASTM A216-WCB
13	BOLT	ASTM A193-B7
14	NUT	ASTM A194-2H
15	SPLIT PIN	ASTM A276-304
16	PLUG	ASTM A276-410
17	GASKET	ASTM A276-304

ITEM	FIG NO.	SIZE	UNIT	d	A	B	C	D	n	E	F	G	S _e	Weight(lbs/kgs)
01	SC150CSF8	2"	mm	51	203	16.3	150	120.7	4	19	92.1	130	8.6	40/18
		2"	in	2.0	8.0	0.64	6.0	4.75	4	3/4	3.62	5.12	0.34	
02	SC150CSF8	2-1/2"	mm	64	216	18	180	139.7	4	19	104.8	155	9.7	49/22
		2-1/2"	in	2.5	8.5	0.71	7.0	5.5	4	3/4	4.12	6.1	0.38	
03	SC150CSF8	3"	mm	76	241	19.5	190	152.4	4	19	127	170	10.4	66/30
		3"	in	3.0	9.5	0.77	7.5	6.0	4	3/4	5.0	6.7	0.41	



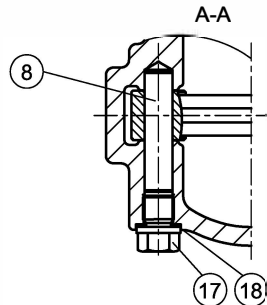
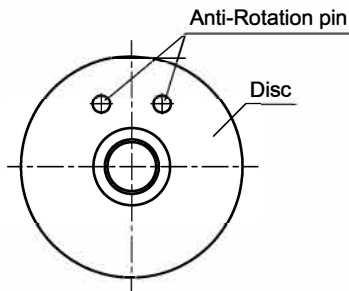
TITLE:		CAST STEEL SWING CHECK VALVE CLASS 150- API TRIM 8- RF	
MATERIAL:	ASTM A216 WCB	UNITS:	Inch, mm
CLASS:	150	DATE:	4/15/19
SCALE:	N.T.S.	FIG. No.:	SC150CSF8
SIZE:	2"-3"	DRAWN BY:	F.J.
CHK'D & APR'D BY:	E.C.	REV:	1
DWG No.:			

NO.	DATE	DESCRIPTION	PRPD	REVD	APP'D	DESIGNED	MARKING SYSTEM	MSS-SP-25	INSPECTION & TEST:	API 598	
△	4/15/19	RELEASED	F.J.	E.C.	E.C.		DIM.OF FLANGE	ANSI B16.5	SHELL	HYDRO	450PSI
							FACE TO FACE	ANSI B16.10	SEAT	AIR	N/A
							WALL THICKNESS	API 594	SEAT	HYDRO	315PSI
							DESIGNED	API 594, ANSI B16.34			



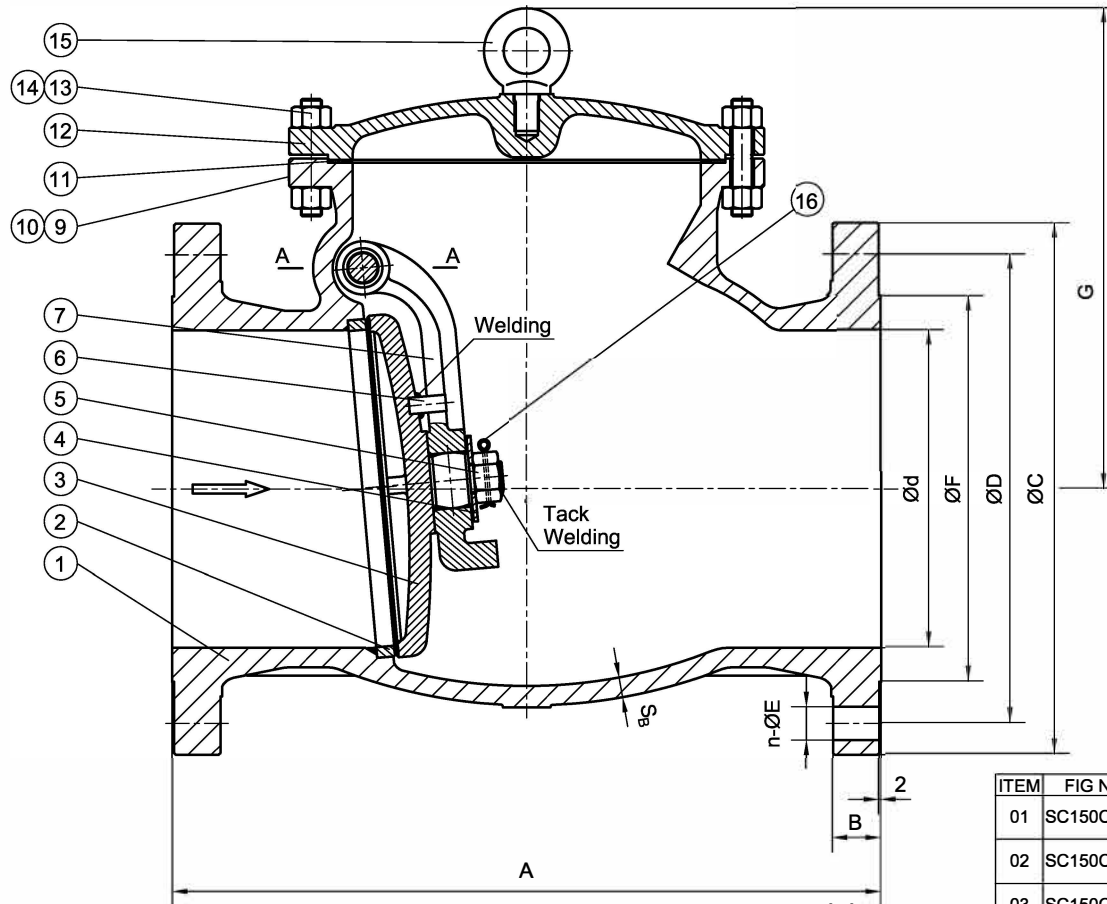
ITEM	NAME	MATERIAL
1	BODY	ASTM A216-WCB
2	SEAT	ASTM A105N+STL
3	DISC	ASTM A105N+13%Cr
4	WASHER	ASTM A276-410
5	NUT	ASTM A276-304
6	ANTI-ROTATION PIN	AISI 1035
7	HINGE ARM	ASTM A216-WCB
8	HINGE PIN	ASTM A276-410
9	NAMEPLATE	ASTM A240-304
10	RIVET	ASTM A240-304
11	GASKET	304+GRAPHITE
12	COVER	ASTM A216-WCB
13	BOLT	ASTM A193-B7
14	NUT	ASTM A194-2H
15	EYEBOLT	AISI 1035
16	SPLIT PIN	ASTM A276-304
17	PLUG	ASTM A276-410
18	GASKET	ASTM A276-304

ITEM	FIG NO.	SIZE	UNIT	d	A	B	C	D	n	E	F	G	S _b	Weight(lbs/kgs)
01	SC150CSF8	4"	mm	102	292	24.3	230	190.5	8	19	157.2	229	11.2	88/40
		4"	in	4.0	11.5	0.96	9.0	7.5	8	3/4	6.19	9.0	0.44	
02	SC150CSF8	5"	mm	127	330	24.3	255	215.9	8	22	185.7	269	11.9	126/57
		5"	in	5.0	13.0	0.96	10.0	8.5	8	7/8	7.31	10.59	0.47	
03	SC150CSF8	6"	mm	152	356	25.9	280	241.3	8	22	215.9	271	11.9	150/68
		6"	in	5.98	14.0	1.02	11.0	9.5	8	7/8	8.5	10.67	0.47	
04	SC150CSF8	8"	mm	203	495	29	345	298.5	8	22	269.9	341	12.7	280/127
		8"	in	8.0	19.5	1.14	13.5	11.75	8	7/8	10.62	13.43	0.5	
05	SC150CSF8	10"	mm	254	622	30.6	405	362	12	25	323.8	403	14.2	476/216
		10"	in	10.0	24.5	1.20	16.0	14.25	12	1	12.75	15.87	0.56	
06	SC150CSF8	12"	mm	305	698	32.2	485	431.8	12	25	381.0	471	16	717/325
		12"	in	12.0	27.5	1.27	19.0	17.0	12	1	15.0	18.54	0.63	
07	SC150CSF8	14"	mm	337	787	35.4	535	476.3	12	29	412.8	510	16.8	873/396
		14"	in	13.27	31	1.39	21.0	18.75	12	1-1/8	16.25	20.0	0.66	



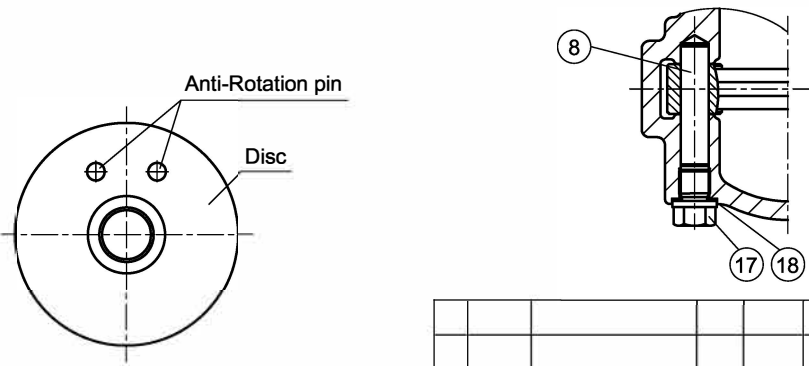
					MARKING SYSTEM	MSS-SP-25	INSPECTION & TEST: API 598			MATERIAL: ASTM A216 WCB			UNITS: Inch, mm							
					DIM.OF FLANGE	ANSI B16.5	SHELL	HYDRO	450PSI	CLASS: 150	DATE: 4/15/19	SCALE: N.T.S.								
					FACE TO FACE	ANSI B16.10	SEAT	AIR	N/A	SIZE: 4"-14"	FIG. No.: SC150CSF8									
					WALL THICKNESS	API 594	SEAT	HYDRO	315PSI	DRAWN BY: F.J.										
<table border="1"> <tr> <td>▲</td> <td>4/15/19</td> <td>RELEASED</td> <td>F.J.</td> <td>E.C.</td> <td>E.C.</td> </tr> </table>					▲	4/15/19	RELEASED	F.J.	E.C.	E.C.	DESIGNED	API 594, ANSI B16.34			CHK'D & APR'D BY: E.C.		REV: 1	DWG No.:		
▲	4/15/19	RELEASED	F.J.	E.C.	E.C.															

TITLE: CAST STEEL SWING CHECK VALVE
CLASS 150- API TRIM 8- RF



ITEM	NAME	MATERIAL
1	BODY	ASTM A216-WCB
2	SEAT	ASTM A105N+STL
3	DISC	ASTM A216-WCB+13%Cr
4	WASHER	ASTM A276-410
5	NUT	ASTM A276-304
6	ANTI-ROTATION PIN	AISI 1035
7	HINGE ARM	ASTM A216-WCB
8	HINGE PIN	ASTM A276-410
9	NAMEPLATE	ASTM A240-304
10	RIVET	ASTM A240-304
11	GASKET	304+GRAPHITE
12	COVER	ASTM A216-WCB
13	BOLT	ASTM A193-B7
14	NUT	ASTM A194-2H
15	EYEBOLT	AISI 1035
16	SPLIT PIN	ASTM A276-304
17	PLUG	ASTM A276-410
18	GASKET	ASTM A276-304

ITEM	FIG NO.	SIZE	UNIT	d	A	B	C	D	n	E	F	G	Se	Weight(lbs/kgs)
01	SC150CSF8	16"	mm	387	864	37	595	539.8	16	29	469.9	578	17.5	1195/542
		16"	in	15.24	34.0	1.45	23.50	21.25	16	1-1/8	18.5	22.75	0.69	
02	SC150CSF8	18"	mm	438	978	40.1	635	577.9	16	32	533.4	604	18.3	1393/632
		18"	in	17.24	38.5	1.58	25.0	22.75	16	1-1/4	21.0	23.78	0.72	
03	SC150CSF8	20"	mm	489	978	43.3	700	635	20	32	584.2	630	19.1	1561/708
		20"	in	19.25	38.5	1.70	27.5	25.0	20	1-1/4	23.0	24.8	0.75	
04	SC150CSF8	24"	mm	591	1295	48.1	815	749.3	20	35	692.2	744	20.6	2637/1196
		24"	in	23.27	51.0	1.89	32.0	29.5	20	1-3/8	27.25	29.29	0.81	

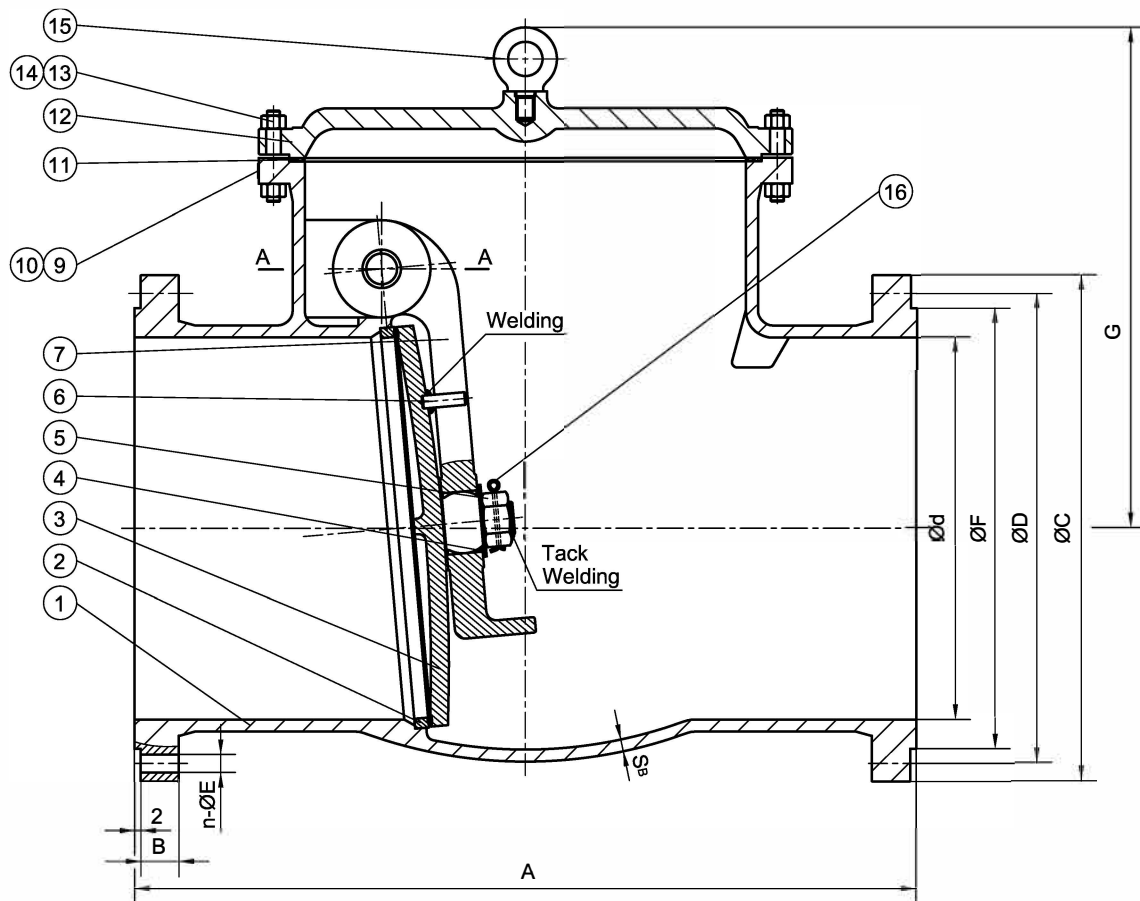


Toll Free 800.582.5837 Local 310.605.0090

Here at J.J. Valve, we utilize a wide variety of products to meet your needs when it comes to industrial valves.

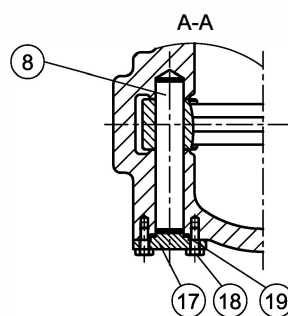
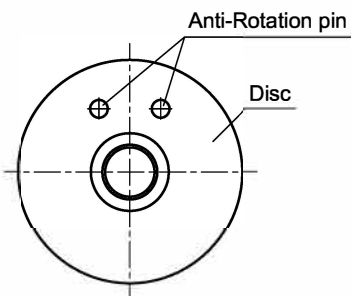
					MARKING SYSTEM	MSS-SP-25	INSPECTION & TEST: API 598			MATERIAL: ASTM A216 WCB			UNITS:	Inch, mm		
					DIM.OF FLANGE	ANSI B16.5	SHELL	HYDRO	450PSI	CLASS: 150			DATE:	4/15/19	SCALE:	N.T.S.
					FACE TO FACE	ANSI B16.10	SEAT	AIR	N/A	SIZE: 16"-24"			FIG. No.:			
					WALL THICKNESS	API 594	SEAT	HYDRO	315PSI	DRAWN BY: F.J.			SC150CSF8			
△	4/15/19	RELEASED	F.J.	E.C.	E.C.	DESIGNED			API 594, ANSI B16.34			CHK'D & APR'D BY:	E.C.	REV: 1	DWG No.:	

TITLE: CAST STEEL SWING CHECK VALVE CLASS 150- API TRIM 8- RF														
MATERIAL: ASTM A216 WCB														
UNITS: Inch, mm														
CLASS: 150														
DATE: 4/15/19														
SCALE: N.T.S.														
SIZE: 16"-24"														
DRAWN BY: F.J.														
FIG. No.:														
SC150CSF8														
CHK'D & APR'D BY: E.C.														
REV: 1														
DWG No.:														



ITEM	NAME	MATERIAL
1	BODY	ASTM A216-WCB
2	SEAT	ASTM A105N+STL
3	DISC	ASTM A216-WCB+13%Cr
4	WASHER	ASTM A276-410
5	NUT	ASTM A276-304
6	ANTI-ROTATION PIN	AISI 1035
7	HINGE ARM	ASTM A216-WCB
8	HINGE PIN	ASTM A276-410
9	NAMEPLATE	ASTM A240-304
10	RIVET	ASTM A240-304
11	GASKET	304+GRAPHITE
12	COVER	ASTM A216-WCB
13	BOLT	ASTM A193-B7
14	NUT	ASTM A194-2H
15	EYEBOLT	AISI 1035
16	SPLIT PIN	ASTM A276-304
17	GLAND	ASTM A105N
18	SCREW	ASTM A193-B7
19	GASKET	304+GRAPHITE

ITEM	FIG NO.	SIZE	UNIT	d	A	B	C	D	n	E	F	G	S _a	Weight(lbs/kgs)
01	SC150CSF8	30"	mm	743	1524	75.1	985	914.4	28	35	857	195	23.4	2637/1196
		30"	in	29.25	60.0	2.95	38.75	36.00	28	1-3/8	33.75	7.68	0.92	



NO.	DATE	DESCRIPTION	PRP'D	REV'D	APP'D	DESIGNED	MARKING SYSTEM	MSS-SP-25	INSPECTION & TEST:	API 598	MATERIAL:	ASTM A216 WCB	UNITS:	Inch, mm			
							DIM.OF FLANGE	ANSI B16.47A	SHELL	HYDRO	450PSI	CLASS:	150	DATE:	4/15/19	SCALE:	N.T.S.
							FACE TO FACE	ANSI B16.10	SEAT	AIR	N/A	SIZE:	30"	FIG. No.:			
							WALL THICKNESS	API 594	SEAT	HYDRO	315PSI	DRAWN BY:	F.J.				
												CHK'D & APR'D BY:	E.C.	REV:	1	DWG No.:	

TITLE: CAST STEEL SWING CHECK VALVE
CLASS 150- API TRIM 8- RF

SC150CSF8